

**PSEG LONG ISLAND LLC
On Behalf of and as Agent for
the LONG ISLAND POWER AUTHORITY f/k/a LONG ISLAND
LIGHTING COMPANY d/b/a LONG ISLAND POWER AUTHORITY**

**Commercial Avenue Equipment Project
Case 25-T-0243**

Environmental Management and Construction Plan

**APPENDIX O
Public Involvement Plan**

TABLE OF CONTENTS

1 INTRODUCTION 1

1.1 Project Benefits 1

2 PUBLIC INVOLVEMENT PLAN (“PLAN”) 2

2.1 Criteria for Successful Public Outreach 2

2.2 Pre-Amendment Filing Phase 3

2.3 Post-Amendment Filing Phase 3

2.4 Construction & Restoration Phase 4

3 PUBLIC OUTREACH TOOLS 7

3.1 Identification of a Project Name 7

3.2 Overarching Messaging 7

3.3 Collateral 7

3.4 Face-to-Face and Virtual Briefings 8

3.5 Website and Social Media 8

3.6 Email 8

3.7 Hotline 8

3.8 Interested Party Outreach 9

3.9 Amendment Filing Notice 9

3.10 Construction Notifications 9

3.11 Data Management 9

LIST OF ATTACHMENTS

- ATTACHMENT O-1 – MAP OF PROJECT LOCATION
- ATTACHMENT O-2 – PSEG LONG ISLAND INTERESTED PARTY INQUIRY PROTOCOL
- ATTACHMENT O-3 – COMMERCIAL AVENUE EQUIPMENT PROJECT INTERESTED PARTIES LIST
- ATTACHMENT O-4 – PROJECT FACT SHEET
- ATTACHMENT O-5 – PROJECT FIELD CARDS
- ATTACHMENT O-6 – AMENDMENT FILING LETTER TO ABUTTING LANDOWNERS
- ATTACHMENT O-7 – LIST OF ABUTTING PROPERTIES
- ATTACHMENT O-8 – STATUTORY SERVICE LIST
- ATTACHMENT O-9 – STATUTORY LANDOWNER LIST
- ATTACHMENT O-10 – STATUTORY LANDOWNER LETTER
- ATTACHMENT O-11 – PUBLIC FILING NOTICE
- ATTACHMENT O-12 – COMPLETED OUTREACH ACTIVITIES
- ATTACHMENT O-13 – NOTICE OF FILING AN ENVIRONMENTAL MANAGEMENT AND
CONSTRUCTION PLAN
- ATTACHMENT O-14 – LETTER TO ABUTTING PROPERTY OWNERS OF THE EM&CP FILING
- ATTACHMENT O-15 – PROJECT HOTLINE SCRIPT

INTRODUCTION

PSEG Long Island LLC, on behalf of and as agent for the Long Island Power Authority f/k/a Long Island Lighting Company d/b/a LIPA (the “Certificate Holder”), has submitted an amendment to an existing Certificate for Case 26333 for the installation, operation, and maintenance of certain above-ground substation equipment on a parcel owned by LIPA. The Commercial Avenue Equipment Project proposes to modify Transmission Line 138-463 and Transmission Line 138-462 to connect to new equipment at the “Commercial Avenue Terminal” which is proposed to be built on the northwest corner of the intersection of Commercial Avenue and Quentin Roosevelt Boulevard in the Town of Hempstead, Nassau County (see Attachment O-1 for a map of the Project location).

The modified electric transmission lines will be located primarily under municipal roadways and rights-of-way, within existing manholes, and on LIPA owned property. The Project will utilize two locations for freeze pits which will be adjacent to existing manholes. The first location will be within the Long Island Rail Road (LIRR) rights-of-way and the other located on Commercial Avenue. Freeze pits will use liquid nitrogen to create temporary ice plugs inside the electrical conduit to isolate and make modifications to the existing electric transmission lines at the Commercial Avenue site.

Project Benefits

The Project upgrades at the facility were identified through the New York Independent System Operator's (NYISO) Public Policy Transmission Need (PPTN) planning process in 2021. The new equipment at the “Commercial Avenue Terminal” is necessary to meet current and future electric capacity needs, and to continue the provision of safe and reliable service in the area and across Long Island.

PUBLIC INVOLVEMENT PLAN (“PLAN”)

A comprehensive public involvement plan providing for proactive, open lines of communication with affected interested parties is essential to the success of the Project. The purpose of this plan is to effectively communicate with stakeholders and other interested parties and keep them informed of project status and activities.

Outreach began in January of 2025, prior to the filing of the amendment to the Certificate and will continue throughout the permitting, construction, and restoration process. The tools of the Public Involvement Plan will help to enable open, transparent, and timely two-way communication between the Project team and the various interested parties. The Plan outlined herein adheres to the Article VII process as outlined by the PSC.

Criteria for Successful Public Outreach

The following overarching public involvement philosophy has been developed for the Project:

- **Proactive:** Anticipate interested parties’ questions and concerns and provide appropriate, timely information.
- **Timely:** Communicate quickly and accurately in a responsive manner in accordance with “PSEG Long Island’s Interested Party Inquiry Protocol” (or “Inquiry Protocol” see Attachment O-2). Inquiries are to be quickly acknowledged by the next business day. Any complaints that are received by the Project team via the Project hotline, email, or other means will be responded to within one business day and will be addressed following the procedures outlined in the “Complaint Management and Resolution Plan” (Appendix D of the EM&CP).
- **Consistent:** Provide consistent responses to inquiries across various audiences and Project segments. The Inquiry Protocol is available to ensure communications are handled in a consistent manner, in accordance with PSEG Long Island’s corporate communication standards.
- **Interactive:** Provide mechanisms for feedback from interested parties. A direct hotline number with voicemail and texting features has been established, a website, and e-mail function are set up for this purpose. The website will remain active throughout the Project, www.CommercialAveEquipment.com.
- **Clear & Concise:** Provide simple, user-friendly communications tailored to each interested party. Avoid the use of jargon or acronyms that may be difficult for interested parties to understand.

Throughout the public involvement process, coordination will occur between the Burns & McDonnell Public Involvement Team, and PSEG Long Island’s Project Management Team, External Affairs, and Communications Teams to further develop the processes, expectations, and desired Project outcomes. Most importantly, the Public Involvement Plan should be implemented with the intent of maintaining and further supporting PSEG Long Island’s relationship and reputation with its customers and stakeholders.

Pre-Amendment Filing Phase

During the Pre-Amendment Filing Phase of the Public Involvement Plan, the focus was on the development of the tools necessary to facilitate communications with the various interested parties, identified in the “Commercial Avenue Equipment Project Interested Parties List” (see Attachment O-3). PSEG Long Island considers “interested parties” to include state and local officials, agency representatives, municipalities, special interest and environmental groups, residents of communities or areas directly surrounding the facility, business owners and operators within the Project area or potentially affected by construction of the Project, and residents in other communities or areas that are adjacent to the facility who may see themselves as affected by the project.

Prior to submitting the amendment, Certificate Holder representatives met with representatives from the Town of Hempstead on March 20, 2025, and Nassau County on April 8, 2025, and provided information about the Project, and the Project need.

The Project established a hotline (631-213-6715), a Project specific email address (info@CommercialAveEquipment.com), and website (www.CommercialAveEquipment.com). The hotline and email address are available on the Project website, the Project Fact Sheet (see Attachment O-4), field cards used by contractors (see Attachment O-5), and are included on all mailings and notifications to abutters of the Project. A form is available on the Project website for public inquiries, complaints, and to sign up for Project notifications.

On April 16, 2025, the Project Team sent a letter (see Attachment O-6) to abutting landowners (see Attachment O-7 for a list of abutters) of the Project location informing them that the Certificate Holder intended to file an amendment to a previous Certificate. The Project Team utilized Nassau County Tax Map records to identify landowners whose property abuts the new Commercial Avenue Terminal location. The Project Team and External Affairs worked with the Permitting Team to complete the required notifications and outreach processes at the time of filing, and afterwards. The efforts include the development of a Statutory Service List (see Attachment O-8) and a Statutory Landowner List (see Attachment O-9). A Statutory Landowner Letter (see Attachment O-10) was mailed to the Statutory Landowner list to disclose the filing. A copy of the amendment application was mailed to the Statutory Service List, and the public filing notice (see Attachment O-11) was printed in Newsday on April 4, 2025, and April 11, 2025.

Post-Amendment Filing Phase

During the post-amendment filing phase, the Project maintained communication tools to receive comments from the public and continued coordination with interested parties. After the filing, the Project team identified additional abutters which may be impacted by the freeze pit activities along the LIRR ROW. Those abutters were added to the Project mailing list and will receive required notifications.

The Project has maintained a list of all completed outreach activities (see Attachment O-12), including briefings with stakeholders and other outreach mechanisms.

The Project will make a copy of the Environmental Management and Construction Plan (“EM&CP”) and a notice of the filing of the EM&CP (see Attachment O-13) available at the public repositories, including the Uniondale Library (400 Uniondale Ave, Uniondale, NY) and the Garden City Library (60 7th Street,

Garden City, NY). A copy of the EM&CP will also be available on the Project’s website. The Project will mail a copy of the EM&CP Filing Notice to abutting landowners, statutory landowners, and publish a copy of the Filing Notice in a newspaper of general circulation. A letter with information about the Project (see Attachment O-14) will be included with the Filing Notice to abutting property owners.

The Project developed a “Complaint Management and Resolution Plan” (CMRP), a copy of this plan will be added to the Project website or can be found in the Project EM&CP. This plan outlines the types of complaints, tracking of complaints, responding to and resolving complaints as well as reporting protocols.

In preparation of the EM&CP, the Project continued coordination with local stakeholders including briefings with Nassau County, and Nassau County Community College. During those meetings, discussions occurred regarding construction, vegetation management, and restoration expectations. Continued coordination occurred throughout the Post-Amendment Filing Phase and the Project included the municipal expectations for restoration and vegetation management in the EM&CP.

The Project will coordinate with Garden City School District to identify a point of contact to receive project notification, emails, and updates on project construction.

Prior to construction commencing, the Project Team shall coordinate with the Nassau County Police Department and the Uniondale Fire District to identify a point of contact for each agency to receive project email updates throughout construction and restoration.

The Project team will coordinate with Nassau Inter-County Express (NICE) Bus to provide Project information, identify a point of contact to receive notifications and project emails, and continue coordination during the construction and restoration phase of the project.

Construction & Restoration Phase

No less than two weeks prior to construction commencing, the Project will disseminate a Notice of Intent to Commence work or “Construction NOI”. Recipients of this notification will include but are not limited to the local emergency services, Town of Hempstead Department of Water, Long Island Rail Road, Nassau County Community College, NICE Bus, National Grid, telecom utilities, and the Nassau County Department of Public Works.

During the construction and restoration phase, public outreach efforts will include door-to-door notifications, emailed construction updates, website updates, quick response to hotline and email inquiries, and continued communications with municipalities and identified stakeholders. The Project website will provide information on scheduled nighttime work, construction updates, information on detours, a 2-week look ahead for the Project construction schedule, and Project wide notifications.

The Project will continue coordination with local municipalities throughout construction and restoration. Prior to construction commencing, key points of contact will be added to the Project email list to receive notifications and schedule updates.

General construction outreach schedule

External Affairs Activities	General Schedule or Project Milestone	Additional Information
Notice of Intent to Commence Work or “Construction NOI” to interested parties	No less than 2 weeks prior to site preparation for construction	Notify the public of the date project construction will commence. Including local officials, school districts, Long Island Rail Road, local water companies, Department of Public Works, transportation services, and emergency services such as fire departments and police departments
Provide Notice of Intent of Commence work or “Construction NOI” to local media	No less than 2 weeks prior to site preparation for construction	Including local newspapers of general circulation and a free publication (if available)
Posting of Notice of Intent of Commence work or “Construction NOI” at Public Repositories	No less than 2 weeks prior to site preparation for construction commencement	Display in the repositories identified in the Application, the Project website, and other public places (such as post offices, libraries, town halls, community centers or other community bulletin boards)
Abutter Notification Letter Mailing: Notice of Intent of Commence work or “Construction NOI”	No less than 2 weeks prior to site preparation for construction	To property owners who properties are crossed by or abut the ROW. Mailed by First class mail.
Door-to-Door Notifications to abutters	Throughout construction activities. Prior to local construction.	Will include expected schedule, duration, type of activities, traffic controls if applicable, and project contact information.
Outreach with School Transportation Lead	Prior to start of construction and when applicable during construction.	
Outreach to Emergency Services	Prior to start of construction and when applicable during construction.	
Website updates: overall project schedule	No less than two weeks prior to construction and throughout the project.	
Email and Website updates: two-week look ahead and construction work maps	Regularly throughout construction.	
Monthly reports on construction activities to NYSDPS	Monthly throughout construction	Monthly reporting includes all facets of work to NYSDPS
Weekly reports to NYS DPS Staff and NYSDEC	Weekly throughout construction	Weekly reports summarizing construction activities, indicating upcoming construction locations for the following week, and include inquiries, complaints and resolutions.
Notification to Nassau County DPW, local emergency services (Police and Fire)	At least 48 hours prior to construction activities within their jurisdiction	Nassau County DPW, Police Department, and Fire Department will be notified prior to commencement of construction activities.

(continued)

Residential Notification of Nighttime work	At least 48 hours prior	Notifications to residential neighbors in advance of any schedule nighttime work activities.
Lane Closures	At least 24 hours prior, unless to address an emergency situation	Whenever a lane of traffic is closed or traffic is required to use other than normal lanes notifications will be made to DPW, police precinct or department, and fire district.
Road Closure Notifications	At least 24 hours prior, or in accordance with municipal regulations, or to address an emergency situation	Residents and businesses in close proximity to road closures will be given advanced notification of construction activities and road closures.
Extended Work Hours	At least 24 hours prior, or in accordance with municipal regulations, or to address an emergency situation	Any work scheduled outside of the permitted work hours Project will provide advance notice to affected property owners and local municipality.
Coordination with local municipalities and Highway Departments	Periodically throughout construction.	Notify the County of approximate date work will begin within their jurisdiction and updates about construction activities.

PUBLIC OUTREACH TOOLS

To promote proactive communications with the public, a number of tools will be used throughout the various phases of the Project. The messaging developed will be overarching and will communicate the need for the Project and the benefits it will provide for the region.

Identification of a Project Name

The naming of any project can have a direct impact on its public perception. The name should be easy for interested parties to remember, and impactful. PSEG Long Island Communications to be consulted on the Project name.

Responsibility: PSEG Long Island

Timing: Prior to publicly unveiling Project.

Overarching Messaging

The overarching messaging should focus on the need and the benefits of the Project.

- The Project must be built for reliability.
- Increased load demand.

Responsibility: PSEG Long Island

Timing: Prior to publicly unveiling Project.

Collateral

Various collateral will be developed for the Project, using the overarching messaging and branding of PSEG Long Island, and the Project.

- Field cards for use during surveys and visible construction activities.
- PowerPoint presentations for interested parties.
- Presentations will be scheduled with elected officials and community stakeholders.
- Project Fact Sheet was developed and includes a project description and is available on the Project website.
- Project mailings; and
- Construction notifications with expected timing and durations

Responsibility: Burns & McDonnell

Timing: During the Pre-Amendment Filing, Post-Amendment Filing, and Construction Phases.

Face-to-Face and Virtual Briefings

Briefings will be held with the various agencies and interested parties throughout the Project in order to identify immediate issues which may require resolution. Municipal officials will receive a briefing customized to the Project's impact upon their jurisdiction.

- Briefings with Nassau County and Nassau County DPW

Responsibility: PSEG Long Island/ Burns & McDonnell

Timing: During Pre-Amendment Filing and Post-Amendment Filing Phases

Website and Social Media

A Project-specific website will be developed to reinforce the overarching messaging for the Project while providing up-to-date information to the interested parties about permitting and other efforts. The website will contain a document repository of publicly available documents and collateral for the Project. Project notifications and news will be updated on the website throughout the Project lifecycle.

Responsibility: Olive Development and Burns & McDonnell

Timing: Prior to publicly unveiling Project with updates as project progresses through Construction and Restoration.

www.CommercialAveEquipment.com

Email

A project specific email address will be created based on the project website. This email address will establish for interested parties to make direct inquires to the Project Team. This email address can also be utilized to send project updates and construction notifications.

Responsibility: Burns & McDonnell

Timing: Prior to publicly unveiling Project.

info@CommercialAveEquipment.com

Hotline

A traditional hotline will be established for interested parties to make direct inquiries to the Project Team. The incoming messages will be recorded, and a response returned within 24 hours or the next business day. The hotline also allows interested parties to text inquiries instead of leaving a voicemail.

Responsibility: Burns & McDonnell

Timing: Prior to publicly unveiling Project.

Hotline Number: 631-213-6715, see Attachment O-15 for Project Hotline Script.

Interested Party Outreach

Coordination will occur with key interested parties to explain the Project and identify a primary point of contact.

- Emergency Service Providers

Responsibility: PSEG Long Island/ Burns & McDonnell

Timing: During the Post-Amendment Filing, and Construction and Restoration Phases

Amendment Filing Notice

At the time of filing the Amendment application, PSEG Long Island will notify abutting landowners to promote Project transparency. The Outreach Team will also work with Legal to facilitate official notification and application distribution required as part of the filing.

Responsibility: Burns & McDonnell

Timing: Prior to filing

Construction Notifications

At the start of and throughout construction, the project will provide construction notifications to abutters and interested parties. These notices will be provided through door-to-door notifications, website updates, or emails. These notifications will be provided to impacted abutters and include information about the upcoming construction and instructions to contact the project hotline or email with any questions or concerns.

Responsibility: PSEG Long Island/ Burns & McDonnell

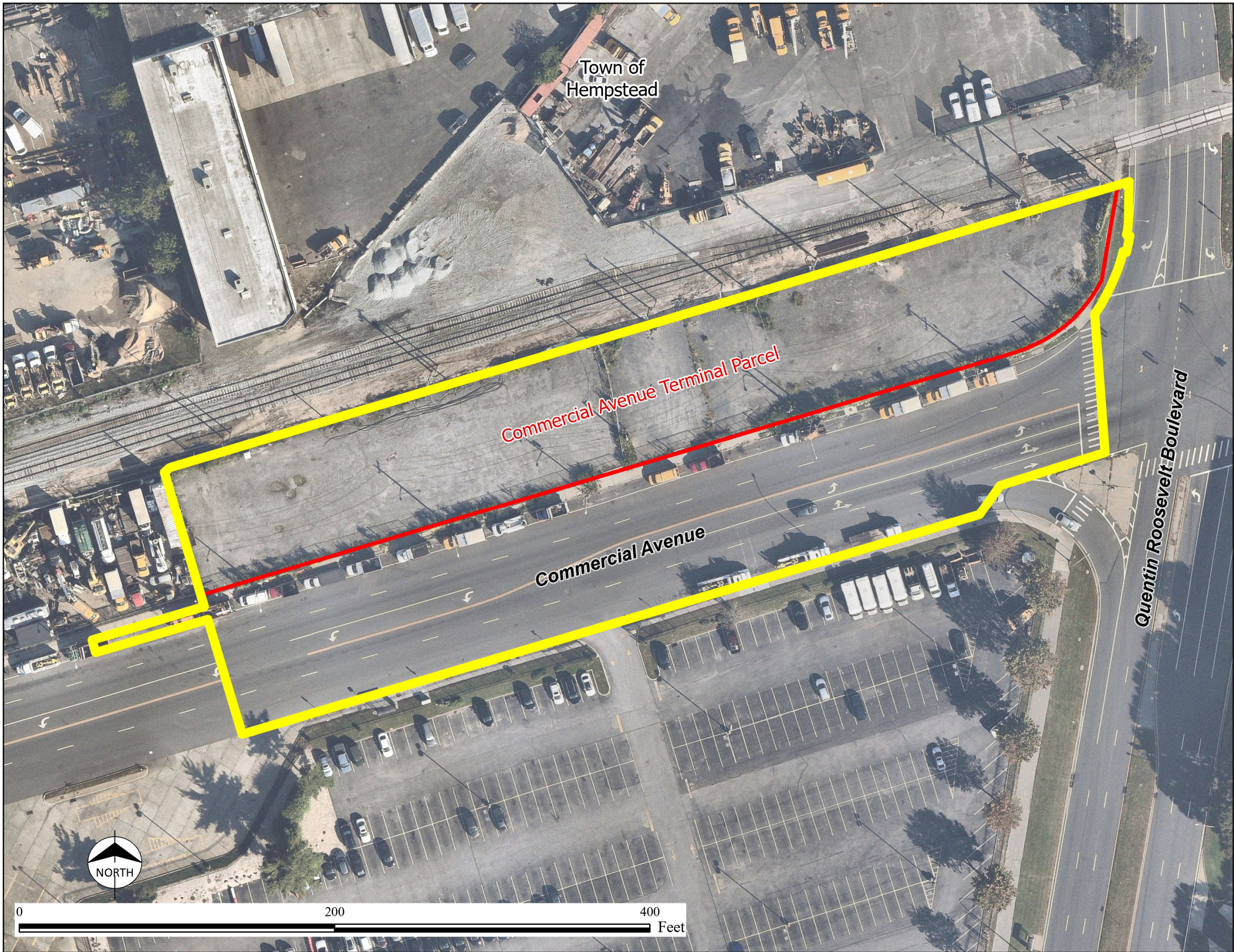
Timing: Construction and Restoration phases.

Data Management

Key to the Public Involvement Plan is efficient data management. External Affairs and Burns & McDonnell will work directly with the Project Team to categorize and manage all communications with interested parties throughout the Project, making sure that documentation is clear, consistent, and concise. Reports will be developed regarding public contact and response, which will be shared with Project Management and PSEG Long Island and may be shared with regulators.

The Project database will be used to house the various contacts, and each interested party inquiry will be given a unique identifier for future reference.

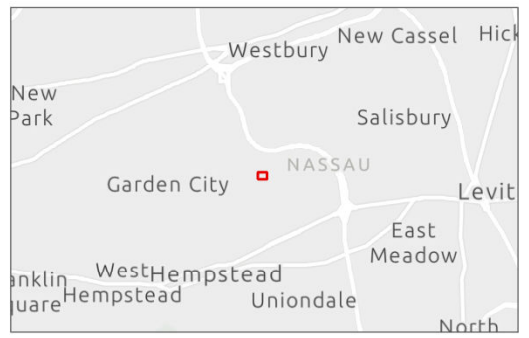
Attachment O-1 - Map of Project Location



LEGEND

- Commercial Avenue Terminal Parcel
- Terminal EM&CP LOD

Sources:
 1. Project details prepared by Burns & McDonnell, July, 2025
 2. NYS GIS Data Clearinghouse
 3. Nearmap US Vertical Imagery - acquired July 2025



PROJECT TITLE



**Commercial Avenue
Equipment Project**

SHEET TITLE

**Figure O-1
Terminal EM&CP
Limit of Disturbance**

SCALE 1" = 60' (Printed on 11"x17")

DATE 03/19/2026
 DRN. BY MK
 CHK. BY MK



FIGURE NO. O-1

Attachment O-2 -PSEG Long Island Interested Party Inquiry Protocol

Overview:

On April 16, 2025, the Commercial Avenue Equipment Project filed an Application for an Amendment to the Certificate of Environmental Compatibility and Public Need Issued in Case 26333 for the Commercial Avenue Equipment Project with the New York State Public Service Commission.

Letters were mailed to local elected officials, local school districts, local emergency service providers, as well as abutting landowners, statutory landowners, and the statutory service list to notify of the filing. Each of these notices included the Project hotline (631-213-6715), website (www.CommercialAveEquipment.com) and email portal (info@CommercialAveEquipment.com) for the public to communicate with the Project directly and proactively.

It should be assumed, therefore, that contacts to the Project hotline, email portal, PSEG Long Island Customer Service, and possibly management team members will occur from the public.

To correctly and accurately process questions, with timeliness, the following Protocol is proposed.

Process:

1. **Hotline Calls:** For all hotline calls, the following will occur.
 - a. BMcD staff receive an email notifying of the call, with an audio recording of the call.
 - b. BMcD staff will return calls to the project hotline within 1 business day.
 - c. BMcD will refer to the Project database to confirm the resident or business is an abutter to the Project.
 - d. BMcD will produce a call report for the External Affairs and Project Management Team.
 - e. If necessary, BMcD will email the appropriate SMEs including Legal and Project Management, to answer any pending questions.
 - f. BMcD will advise the Core Team of call inquiry and any follow-up.
 - g. BMcD will add the call report to the SharePoint site.
2. **Email Inquiries:** For all email inquiries through the website portal, or to private email accounts, the following will occur.
 - a. BMcD will either receive the email directly, or the recipient will forward to BMcD.
 - b. BMcD will verify if the email sender is an abutter to the Project according to the Project database.
 - c. BMcD staff will return emails to the project within 1 business day. If additional time is needed to respond to specific questions, the team will send a general response acknowledging receipt.
 - d. BMcD will forward the email to the appropriate Project SMEs for an answer, including Legal and Project Management.
 - e. BMcD will craft a response and provide to External Affairs using input from SMEs, Legal and Project Management.
 - f. BMcD will respond, advise the Core Team of any further response.
 - g. BMcD will add the email chain to the SharePoint.
3. **Text Messages:** See Hotline process above.
4. For all external briefings, a meeting summary will be produced and uploaded to the Project SharePoint website.

Attachment O-3 - Commercial Ave Equipment Project Interested Parties List

State Political	Contact
New York State Senate District 6	Senator Siela Bynoe
New York State Assembly District 19	Assemblyman Edward P. Ra
Municipal	
Nassau County	County Executive Bruce Blakeman
Nassau County Attorney	Thomas A. Adams
Nassau County Department of Public Works	Michael Kwaschyn, Acting Commissioner
Emergency Services	
Nassau County Police Department, 3rd Precinct	
Uniondale Fire District	George Martinez
Schools	
Garden City School District	Dr. Kusum Sinha
Regional	
Town of Hempstead Department of Water	John Reinhardt, Commissioner
Long Island Power Authority	Lisa Zafonte, Assistant General Counsel
LIRR	Rob Free, President LIRR
Nassau Inter-County Exchange (NICE) Bus	Jack Khzouz, CEO
Nassau County Community College	Dr. Maria Conzatti
National Grid	
Verizon	
Cablevision	

Attachment O-4 - Project Fact Sheet



Commercial Avenue Equipment Project

PSEG Long Island is committed to delivering best-in-class system reliability by expanding electrical capacity to meet the energy needs of the communities it serves, today and in the future.

Project Overview & Benefits

PSEG Long Island, as the agent of LIPA, has filed an application for an amendment to an existing Article VII certificate for modifications to two existing transmission lines. This project is necessary to meet current and future electric capacity needs, and to continue the provision of safe and reliable service in the area and across Long Island. The Commercial Avenue Equipment Project will include the installation of new substation equipment on LIPA-owned property, on the northwest corner of Commercial Avenue and Quentin Roosevelt Boulevard in Uniondale. Existing lines will be rerouted to tap into and out of the new substation equipment at the Commercial Avenue site and will be located primarily under municipal roadways and rights-of-way, within existing manholes, and on LIPA-owned property. The project will utilize temporary excavation pits to isolate and make modifications to the existing electrical transmission lines. These upgrades were identified through the New York Independent System Operator's (NYISO) Public Policy Transmission Need (PPTN) planning process.

Project Area:



Permitting & Consultation Process

To construct the Project, PSEG Long Island will need, in addition to other necessary permits:

- The New York State Public Service Commission's issuance of an amendment to the Article VII Certificate of Environmental Compatibility and Public Need and approval of an Environmental Management & Construction Plan (EM&CP).
- Approval from or consultation with the New York State Department of Environmental Conservation, New York State Office of Parks, Recreation & Historic Preservation, and Nassau County.

New York State Public Service Commission Article VII Information

The Project's Public Service Law Article VII amendment application and related case documents in this case (Case 25-T-0243) can be accessed on the PSC website (www.dps.ny.gov) by clicking "File Search" and filling in the case number (25-T-0243). This will bring up the main Document and Matter Management ("DMM") page(s) for this case, where the materials are located.

For Questions About the Commercial Avenue Equipment Project,
Call or Text 631-213-6715 Email info@CommercialAveEquipment.com
Visit www.CommercialAveEquipment.com

Attachment O-5 - Project Field Cards

Commercial Avenue Equipment Project

PSEG Long Island is committed to delivering best-in-class electric service to you, our customers, by improving the reliability and capacity of the electric transmission system.

Call or Text: 631-213-6715



PSEG Long Island is planning to install new substation equipment on a single property, owned by LIPA, on the corner of Commercial Avenue and Quentin Roosevelt Boulevard in Uniondale. Existing lines would tap into and out of the new substation equipment. If you have questions about the project, contact us directly.

Call or Text: 631-213-6715

**Email: info@CommercialAveEquipment.com
www.CommercialAveEquipment.com**



Attachment O-6 - Amendment Filing Letter to Abutting Landowners

15 Park Drive
Melville, NY 11747



April 15, 2025

Re: Introduction to the Proposed Commercial Avenue Equipment Project

Dear Neighbor:

PSEG Long Island LLC (or PSEG Long Island), on behalf of and as agent for the Long Island Power Authority d/b/a LIPA, has identified an important electrical need in your area, which will be addressed through the proposed Commercial Avenue Equipment Project (the "Project"). The Project is intended to increase the load capacity and reliability of the electric transmission system on Long Island.

Electric transmission lines play a crucial role in our power grid by carrying power from generation sources to the substations that serve residences and businesses in our communities with lower-voltage electricity. To reinforce LIPA's electric transmission system in your area, the Project would include the installation of new substation equipment on a LIPA-owned property located on the northwest corner of Commercial Avenue and Quentin Roosevelt Boulevard in Uniondale. Existing lines would be rerouted to tap into and out of the new substation equipment at the Commercial Avenue site.

This Project is needed to meet current and future capacity needs and to continue the provision of safe, robust, and reliable service in the area. The Project is proposed to start construction in fall 2027 to be in service by spring 2028 for PSEG Long Island to meet the identified needs.

Construction will be performed with the intent of minimizing impact to residents and travelers in the area to the extent practicable. As part of the permitting process for the Commercial Avenue Equipment Project, PSEG Long Island is consulting with Nassau County and the Town of Hempstead and is pursuing State approval in the form of an amended "Certificate of Environmental Compatibility and Public Need" from the New York State Public Service Commission. PSEG Long Island is also consulting with the New York Department of Environmental Conservation, and New York State Office of Parks, Recreation & Historic Preservation.

We want you to understand the nature of this project and its importance to your community. Along with this letter, we have included a fact sheet about the Commercial Avenue Equipment Project which provides ways to communicate with us directly if you have further questions. You can find more information about the project at our website (www.CommercialAveEquipment.com), or contact the project representatives directly through email (info@CommercialAveEquipment.com) or call or text the project hotline (631-213-6715).

Thank you for your time.

Sincerely,

Mike Iannelli
Commercial Avenue
Equipment Project
PSEG Long Island

Attachment O-7 - List of Abutting Properties

Parcel Address	City	State	Zip Code
327 ELLINGTON AVE E	GARDEN CITY	NY	11530-4897
601 BROOK ST	GARDEN CITY	NY	11530-6431
565 COMMERCIAL AVE	GARDEN CITY	NY	11530-6444
665 COMMERCIAL AVE	GARDEN CITY	NY	11530-6409
657 COMMERCIAL AVE	GARDEN CITY	NY	11530-6449
830 STEWART AVENUE	HEMPSTEAD	NY	11530
600 COMMERCIAL AVE	GARDEN CITY	NY	11530-6418
650 COMMERCIAL AVE	GARDEN CITY	NY	11530-6418
560 COMMERCIAL AVE	GARDEN CITY	NY	11530-6418
635 COMMERCIAL AVE	GARDEN CITY	NY	11530-6409
563 BROOK ST	GARDEN CITY	NY	11530
204 ELLINGTON AVE W	GARDEN CITY	NY	11530-5067
700 COMMERCIAL AVE	GARDEN CITY	NY	11530-6410
329 HAZELHURST AVENUE	HEMPSTEAD	NY	11530
100 QUENTIN ROOSEVELT BLVD STE 516	GARDEN CITY	NY	11530-4843
586 COMMERCIAL AVE	GARDEN CITY	NY	11530-6418
328 ELLINGTON AVE E	GARDEN CITY	NY	11530-4804
585 COMMERCIAL AVE	GARDEN CITY	NY	11530-6444
217 WHEELER AVE	GARDEN CITY	NY	11530-6717
620 COMMERCIAL AVE	GARDEN CITY	NY	11530
585 BROOK ST	GARDEN CITY	NY	11530-6415
99 COMMERCIAL AVE	GARDEN CITY	NY	11530-6417
215 E WHEELER AVE	GARDEN CITY	NY	11530
215 W WHEELER AVE	GARDEN CITY	NY	11530
216 E WHEELER AVE	GARDEN CITY	NY	11530
216 W WHEELER AVE	GARDEN CITY	NY	11530
217 E WHEELER AVE	GARDEN CITY	NY	11530
217 W WHEELER AVE	GARDEN CITY	NY	11530
			(continued)

PARCEL ADDRESS	CITY	STATE	ZIP CODE
218 E WHEELER AVE	GARDEN CITY	NY	11530
218 W WHEELER AVE	GARDEN CITY	NY	11530
201 ELLINGTON AVE W	GARDEN CITY	NY	11530
202 ELLINGTON AVE W	GARDEN CITY	NY	11530
203 ELLINGTON AVE W	GARDEN CITY	NY	11530
204 ELLINGTON AVE W	GARDEN CITY	NY	11530
205 ELLINGTON AVE W	GARDEN CITY	NY	11530
206 ELLINGTON AVE W	GARDEN CITY	NY	11530
207 ELLINGTON AVE W	GARDEN CITY	NY	11530
208 ELLINGTON AVE W	GARDEN CITY	NY	11530
209 ELLINGTON AVE W	GARDEN CITY	NY	11530
210 ELLINGTON AVE W	GARDEN CITY	NY	11530
211 ELLINGTON AVE W	GARDEN CITY	NY	11530
212 ELLINGTON AVE W	GARDEN CITY	NY	11530
213 ELLINGTON AVE W	GARDEN CITY	NY	11530
214 ELLINGTON AVE W	GARDEN CITY	NY	11530
215 ELLINGTON AVE W	GARDEN CITY	NY	11530
216 ELLINGTON AVE W	GARDEN CITY	NY	11530
217 ELLINGTON AVE W	GARDEN CITY	NY	11530
218 ELLINGTON AVE W	GARDEN CITY	NY	11530
219 ELLINGTON AVE W	GARDEN CITY	NY	11530
220 ELLINGTON AVE W	GARDEN CITY	NY	11530
221 ELLINGTON AVE W	GARDEN CITY	NY	11530
222 ELLINGTON AVE W	GARDEN CITY	NY	11530
223 ELLINGTON AVE W	GARDEN CITY	NY	11530
224 ELLINGTON AVE W	GARDEN CITY	NY	11530
225 ELLINGTON AVE W	GARDEN CITY	NY	11530
226 ELLINGTON AVE W	GARDEN CITY	NY	11530
227 ELLINGTON AVE W	GARDEN CITY	NY	11530
			(continued)

Parcel Address	City	State	Zip Code
228 ELLINGTON AVE W	GARDEN CITY	NY	11530
229 ELLINGTON AVE W	GARDEN CITY	NY	11530
230 ELLINGTON AVE W	GARDEN CITY	NY	11530
231 ELLINGTON AVE W	GARDEN CITY	NY	11530
232 ELLINGTON AVE W	GARDEN CITY	NY	11530
233 ELLINGTON AVE W	GARDEN CITY	NY	11530
234 ELLINGTON AVE W	GARDEN CITY	NY	11530
235 ELLINGTON AVE W	GARDEN CITY	NY	11530
236 ELLINGTON AVE W	GARDEN CITY	NY	11530
237 ELLINGTON AVE W	GARDEN CITY	NY	11530
238 ELLINGTON AVE W	GARDEN CITY	NY	11530
239 ELLINGTON AVE W	GARDEN CITY	NY	11530
240 ELLINGTON AVE W	GARDEN CITY	NY	11530
241 ELLINGTON AVE W	GARDEN CITY	NY	11530
242 ELLINGTON AVE W	GARDEN CITY	NY	11530
243 ELLINGTON AVE W	GARDEN CITY	NY	11530
244 ELLINGTON AVE W	GARDEN CITY	NY	11530

Attachment O-8 - Statutory Service List

First Name	Last Name	Title	Organization	Address	Address Cont	City	State	Zip
Bruce	Blakeman	County Executive	Nassau County	1550 Franklin Avenue		Mineola	New York	11501
John	Ferretti, Jr.	Supervisor	Town of Hempstead	One Washington Street		Hempstead	New York	11550
Hope	Knight	Commissioner, President and CEO	NYS Dept. of Economic Development	633 Third Avenue	Floor 37	New York	New York	10017
Richard	Ball	Commissioner	NYS Dept. of Agriculture and Markets	10B Airline Drive		Albany	New York	12235
Marie Therese	Dominguez	Commissioner	NYS Dept. of Transportation	50 Wolf Road	POD 53	Albany	New York	12232
Sean	Mahar	Commissioner	NYS Dept. of Environmental Conservation	625 Broadway		Albany	New York	12233
Richard B.	Causin, P.E	Regional Director	NYS Dept. of Transportation-Region 10	250 Veterans Memorial Highway		Hauppauge	New York	11788
Cathy	Haas	Regional Director	NYS Dept. of Environmental Conservation	SUNY @ Stony Brook	50 Circle Road	Stony Brook	New York	11790
Walter	Mosley	Secretary of State	NYS Department of State	One Commerce Plaza	99 Washington Avenue	Albany	New York	12231
Randy	Simons	Commissioner	NYS Office of Parks, Recreation & Historic Preservation	625 Broadway		Albany	New York	12207
Rob	Free	President	Long Island Rail Road	Jamaica Station		Jamaica	New York	11435
Hon. Siela A.	Bynoe	Senator	NYS Senate District 6	Legislative Office Building	Room 947	Albany	New York	12247

(continued)

First Name	Last Name	Title	Organization	Address	Address Cont	City	State	Zip
Hon. Edward P.	Ra	Assemblyman	NYS Assembly District 19	CAP 444		Albany	New York	12248
			Uniondale Library	400 Uniondale Avenue		Uniondale	New York	11553
			Garden City Library	60 7th Street		Garden City	New York	11530

Attachment O-9 - Statutory Landowner List

First Name	Last Name	Title	Organization	Address	Address (Cont.)	City	State	Zip
Haley	Stein	General Counsel	Long Island Railroad	c/o Metropolitan Transportation Authority	2 Broadway, 4th Floor	New York	New York	10004
Thomas A.	Adams	County Attorney	Nassau County	Office of the County Attorney	One West Street	Mineola	New York	11501
Lisa	Zafonte	Assistant General Counsel	Long Island Power Authority	333 Earle Ovington Blvd	Suite 403	Uniondale	New York	11553
Luvenia	Hyson		United States Postal Service	475 L'Enfant Plaza SW		Washington	DC	20260

Attachment O-10 - Statutory Landowner Letter

NOTICE PURSUANT TO PSL §122(2)(c)

April 15, 2025

BY FIRST CLASS MAIL

TO ALL LANDOWNERS OF LAND ON WHICH ANY PORTION OF THE FACILITY DESCRIBED BELOW IS TO BE LOCATED:

PSEG Long Island LLC, on behalf of and as agent for the Long Island Lighting Company d/b/a LIPA ("LIPA"), a wholly-owned subsidiary of the Long Island Power Authority (the "Applicant"), intends to file on or about April 15, 2025, an application with the New York State Public Service Commission ("Commission" or "PSC") for an amendment to a Certificate of Environmental Compatibility and Public Need under Public Service Law ("PSL") Article VII for the construction, operation and maintenance of the Commercial Avenue Equipment Project (the "Project") in Nassau County, New York.

The Project is the Applicant's proposed work described below, which requires an Amendment to the Certificate issued for Line 138-463 on November 1, 1973, in Commission Case 26333.

Lines 138-462 and 138-463 are existing underground electric transmission lines that operate at 138 kilovolts ("kV"). Each line currently extends from Stewart Avenue Substation to Newbridge Substation, both substations being in the Town of Hempstead, Nassau County. Line 138-462 is not an Article VII certified line; however, as the electric system need for this Project's proposed work on Line 138-462 is the same as that for Line 138-463, the work proposed on both lines will be included in the Application for the Commercial Avenue Equipment Project.

As proposed, the Project would include the installation of new substation equipment on a LIPA-owned property located on the northwest corner of Commercial Avenue and Quentin Roosevelt Boulevard in the Town of Hempstead. LIPA intends to designate the property as the "Commercial Avenue Terminal." Lines 138-462 and 138-463 would tap into and out of the new substation equipment, resulting in the decommissioning of approximately 300 total feet of the existing lines. The taps in and out of the substation equipment would be done via short sections of new underground conductor, requiring temporary excavation techniques utilizing existing manholes. The Applicant proposes open cut trenching near the intersection of Commercial Avenue and Quentin Roosevelt Boulevard to install the new underground conductor that connects Lines 138-462 and 138-463 to the Commercial Avenue Terminal property.

Additional information about the Project is available from the Applicant by telephone (631-213-6715), email (info@CommercialAveEquipment.com), and at the Project's website (www.CommercialAveEquipment.com).

Your property may be impacted by the Project.

After the Application has been filed and the Commission has assigned it a case number, interested persons who wish to participate as parties in this case may file a request for party status in the case. This may be done through the Commission's web site. From the home page of the Commission's website (<https://dps.ny.gov>), a prospective party should click on "Commission Files" and then choose "File Search" in the drop-down menu. In the list under "Popular Searches" at the lower left side of the page, select "Advanced Search for Commission Case Related Documents." In the section labeled "Enter full Title or any portion of the text contained in Title" in the right column of the web page that appears, enter "Commercial Avenue Equipment Project" and press "Search." Then, in the "Search Result" that appears, click on the "Matter/ Case Number" on the left side. This will bring the user to the main Document and

Matter Management (“DMM”) page for this case. On that page, the prospective party should click the button at the upper right labeled “Request for Party Status” to see a web page with instructions for the procedures to follow to request party status.

Ways to Comment to the Commission:

Via the Internet or Mail: Members of the public may submit comments by email to the Hon. Michelle L. Phillips, Secretary, at secretary@dps.ny.gov or by mail to Secretary Phillips at the New York State Public Service Commission, Three Empire State Plaza, Albany, New York 12223-1350. Comments may also be entered directly into the case file for this matter by clicking on the button labeled “Post Comments” at the upper right on the main DMM page for this case (see above).

Via the Commission’s Toll-Free Opinion Line: Individuals may choose to submit comments by calling the Commission’s Opinion Line at 1-800-335-2120. This line is set up to receive in-state calls 24 hours a day. These calls are not transcribed but a summary is provided to the Administrative Law Judge who will report to the Commission. All comments should refer to the case number.

All comments will become part of the record considered by the Commission. Comments will be accepted throughout the pendency of this case. Additionally, on the main DMM page for this case (see above), written comments can be viewed on the “Public Comments”, and the “Filed Documents” tab will contain other documents in the record, such as the application and transcripts of public statement hearings. A copy of the Application will be available for public inspection in each of the following local public libraries on or shortly after the date the Application is filed with the Commission: Uniondale Library, 400 Uniondale Avenue, Uniondale, NY 11553; and, Garden City Library, 60 7th Street, Garden City, NY 11530. In addition, copies of the Application will be available for public inspection at the Department of Public Service Offices in Albany (Office of Central Files, 14th Floor, Three Empire State Plaza, Albany, NY 12223). Many libraries offer free internet service, which can be used to obtain access to the Commission’s website, including the DMM.

Attachment O-11 - Public Filing Notice

PUBLIC NOTICE

APPLICATION OF PSEG LONG ISLAND ON BEHALF OF AND AS AGENT FOR THE LONG ISLAND LIGHTING COMPANY D/B/A/ LIPA FOR AN AMENDMENT TO A CERTIFICATE OF ENVIRONMENTAL COMPATIBILITY AND PUBLIC NEED PURSUANT TO ARTICLE VII OF THE PUBLIC SERVICE LAW

TO WHOM IT MAY CONCERN

PLEASE TAKE NOTICE that PSEG Long Island LLC on behalf of and as agent for the Long Island Lighting Company d/b/a LIPA (“LIPA” or the “Applicant”) intends to file an application (“Application”) with the New York State Public Service Commission (“Commission”) pursuant to Article VII of the Public Service Law (“PSL”) of the State of New York for an amendment (“Certificate Amendment” or “Amendment”) to a Certificate of Environmental Compatibility and Public Need (“Certificate”) for the construction, operation and maintenance of the Commercial Avenue Equipment Project (“Project”). Before constructing the Project, the Applicant must receive a Certificate Amendment from the Commission.

DATE OF FILING

The Applicant expects to file the Application with the Commission on or about April 15, 2025.

PROJECT DESCRIPTION

The Project is the Applicant’s proposed work described below, which requires an Amendment to the Certificate issued for Line 138-463 on November 1, 1973, in Commission Case 26333. Lines 138-462 and 138-463 are existing underground electric transmission lines that operate at 138 kilovolts (“kV”). Each line currently extends from Stewart Avenue Substation to Newbridge Substation, both substations being in the Town of Hempstead, Nassau County. Line 138-462 is not an Article VII certified line; however, as the electric system need for this Project’s proposed work on Line 138-462 is the same as that for Line 138-463, the work proposed on both lines will be included in the Application for the Commercial Avenue Equipment Project.

As proposed, the Project would include the installation of new substation equipment on a LIPA-owned property located on the northwest corner of Commercial Avenue and Quentin Roosevelt Boulevard in the Town of Hempstead. LIPA intends to designate the property as the “Commercial Avenue Terminal.” Lines 138-462 and 138-463 would tap into and out of the new substation equipment, resulting in the decommissioning of approximately 300 total feet of the existing lines. The taps in and out of the substation equipment would be done via short sections of new underground conductor, requiring temporary excavation techniques utilizing existing manholes. The Applicant proposes open cut trenching near the intersection of Commercial Avenue and Quentin Roosevelt Boulevard to install the new underground conductor that connects Lines 138-462 and 138-463 to the Commercial Avenue Terminal property.

LOCATION OF PROJECT

The proposed location of the Project is underground near the intersection of Commercial Avenue and Quentin Roosevelt Boulevard and aboveground on the Commercial Avenue Terminal property in the Town of Hempstead, Nassau County.

The location of the Project's facilities will be depicted in the Application and associated figures.

AVAILABILITY OF APPLICATION

A copy of the Commercial Avenue Equipment Project Application will be served upon the chief executive officers of Nassau County and the Town of Hempstead and a copy will be available for public inspection in each of the following locations: Uniondale Library, 400 Uniondale Avenue, Uniondale, NY 11553; and Garden City Library, 60 7th Street, Garden City, NY 11530.

In addition, a copy of the Application will be available for public inspection at the Department of Public Service Offices in Albany (Office of Central Files, 14th Floor, Three Empire State Plaza, Albany, NY 12223) and will be posted on the Commission's website (www.dps.ny.gov).

ADDITIONAL ASSISTANCE

For information or assistance concerning the Application, interested persons may contact the following:

Hon. Michelle L. Phillips

Secretary
State of New York Public
Service Commission
Empire State Plaza, Agency Building 3
Albany, NY 12223-1350
Phone: (518) 474-6350
Fax: (518) 486-6081

Commercial Avenue Equipment Project Information:

Phone: 631-213-6715
Email: info@CommercialAveEquipment.com
Website: www.CommercialAveEquipment.com

Attachment O-12 - PSEG Long Island Commercial Ave Equipment Project Outreach Completed

<u>External Affairs Activities</u>	<u>Date Completed</u>
Municipal Consultations Pre-Filing:	
<ul style="list-style-type: none"> • Town of Hempstead 	3/20/25
<ul style="list-style-type: none"> • Nassau County Government 	4/8/25
Newspaper Notifications: Amendment Application Filing: Newsday	4/4/25 & 4/11/25
Abutting Landowner Letter: Amendment Filing	4/16/25
Statutory Service List: Amendment Filing Notice	4/16/25
Statutory Landowner Notification: Amendment Filing Letter	4/16/25
Municipal and Stakeholder Consultations Post-Filing:	
<ul style="list-style-type: none"> • Nassau County Community College 	1/22/26
<ul style="list-style-type: none"> • Nassau County Department of Public Works 	2/26/26
<ul style="list-style-type: none"> • NICE Bus 	4/8/26

Attachment O-13 - Notice of Filing an Environmental Management and Construction Plan

PUBLIC NOTICE

NOTICE OF FILING OF AN ENVIRONMENTAL MANAGEMENT AND CONSTRUCTION PLAN – COMMERCIAL AVENUE EQUIPMENT PROJECT

Subject: Case 25-T-0243 - Petition of Long Island Lighting Company d/b/a LIPA for an Amendment to the Certificate of Environmental Compatibility and Public Need, Issued in Case 26333, for the Commercial Avenue Equipment Project

NOTICE OF FILING OF AN ENVIRONMENTAL MANAGEMENT AND CONSTRUCTION PLAN FOR THE COMMERCIAL AVENUE EQUIPMENT PROJECT

On or about May 12, 2026, PSEG Long Island LLC on behalf of and as agent for the Long Island Power Authority d/b/a LIPA f/k/a the Long Island Lighting Company, (“PSEG Long Island” or the “Company”) will file a proposed Environmental Management and Construction Plan (“EM&CP”) with the New York Public Service Commission (“Commission”) for Phase I of the Commercial Ave Equipment Project (the “Project”). In its entirety, the Project includes the installation of new substation equipment on LIPA-owned property, on the northwest corner of Commercial Avenue and Quentin Roosevelt Boulevard in Uniondale. Existing lines, which are under the jurisdiction of the Commission, will be rerouted to tap into and out of the new substation equipment at the Commercial Avenue site and will be located primarily under municipal roadways and rights-of-way, within existing manholes, and on LIPA owned property. The EM&CP will be filed in two phases. Phase I of the EM&CP will include the installation of two sets of three single phase air-core reactors and minor modifications to two existing high-pressure fluid filled (“HPFF”) electric transmission lines between the existing LIPA Stewart Ave and Newbridge Road substations. Phase II will be filed at a later date and will include details on the new equipment to be installed on LIPA owned property in the Town of Hempstead, which includes two sets of three, single phase air-core reactors that will serve to regulate the two HPFF lines. The Project is driven by the need to provide substantial operational and reliability benefits to LIPA’s customers.

EM&CP

The EM&CP describes the environmental protection measures to be implemented during construction of this Project. Included in the EM&CP is information relating to the specific location of the proposed construction procedures and environmental protection measures to be implemented for the Project. The EM&CP has been filed with the Commission in compliance with the Commission’s “Order Approving Amendment to the Certificate of Environmental Compatibility and Public Need” in Case 25-T-0243, issued and effective September 19, 2025.

PSEG Long Island has established a website to provide additional information to the public about the Project: <https://www.CommericalAveEquipment.com>. An electronic version of the EM&CP will be available for public inspection on this website. The EM&CP may also be viewed online at the website maintained by the New York State Department of Public Service at www.dps.ny.gov. From the homepage, click on “Search,” and enter the case number, 25-T-0243, in the “Search by Case Number” field.

The EM&CP will be available for public inspection during normal business hours at the following locations:

- Uniondale Library
400 Uniondale Avenue
Uniondale, New York 11553
- Garden City Library
60 7th Street
Garden City, New York 11530

COMMENTS, COMPLAINTS AND FURTHER INFORMATION

Any person may comment on the EM&CP by filing written comments with both the Commission Secretary and PSEG Long Island (at the addresses immediately below) within thirty (30) days of (a) the date the EM&CP was filed with the Commission, or (b) the date of newspaper publication of this notice, whichever is later. Please reference Case 25-T-0243 – Commercial Avenue Equipment Project when making any comments, complaints, or requesting further information regarding the project.

Hon. Michelle L. Phillips
Secretary to the Commission
New York State Public Service Commission
Three Empire State Plaza
Albany, NY 12223-1350
Phone: (518) 474-4520
Email: secretary@dps.ny.gov

James Godfrey
Project Manager
PSEG Long Island
999 Stewart Ave
Bethpage, New York 11714
Mailing Address: PO Box 897
Patchogue, New York 11772
Phone: (631) 213-6715
Email: info@commercialaveequipment.com

The PSEG Long Island agent or employee who will receive complaints, if any, during the construction of the Project is James Godfrey, whose contact information is immediately above. Any person desiring additional information about a specific geographical location or specific subject may request it from PSEG Long Island as indicated above. Any request for additional information should be specific as to the subject of the information desired.

Attachment O-14 -Letter to Abutting Property Owners of the EM&CP Filing

15 Park Drive
Melville, NY 11747



May 12, 2026

Re: Filing of the Environmental Management and Construction Plan for the “Commercial Avenue Equipment Project”

Dear Neighbor:

PSEG Long Island LLC, on behalf of and as agent for the Long Island Power Authority, has identified an important electrical need in your area.

The Commercial Ave Equipment Project proposes to modify two existing underground transmission lines to connect to new equipment on LIPA-owned property on the northwest corner of Commercial Avenue and Quentin Roosevelt Boulevard in Uniondale. The existing underground lines will be rerouted to tap into and out of the new substation equipment at the Commercial Avenue site. The project will utilize temporary excavation pits in roadways and municipal rights-of-way to isolate and modify the existing lines. The new equipment is needed to increase the load capacity and reliability of the electric transmission system on Long Island.

On or about **May 12, 2026**, PSEG Long Island will be filing a proposed Environmental Management and Construction Plan (EM&CP) for the Commercial Avenue Equipment Project with the New York State Public Service Commission. For details on the filing, please see the enclosed *Notice of Filing of an Environmental Management and Construction Plan – Commercial Avenue Equipment Project*.

You can find more information about the project at our website (www.CommercialAveEquipment.com), contact project representatives directly through email (info@CommercialAveEquipment.com), or call or text the project hotline (631-213-6715).

Sincerely,

Commercial Avenue
Equipment Project
PSEG Long Island

Attachment O-15 - Project Hotline Script

During Pre-Amendment Filing and prior to receiving Notice to Proceed:

“Hello, you have reached the PSEG Long Island Commercial Avenue Amendment Project hotline. Please leave your name, address, and telephone number, and a brief message, and someone will return your call as soon as possible. Thank you.”

After Notice to Proceed Received

“You have reached the PSEG Long Island Commercial Ave Equipment Project hotline. If you have a question or concern, please leave your name, telephone number, and a brief message and we will return your call by the next business day. If this call is related to an emergency, please call 911. For additional general inquiries, you may contact the NYS Secretary to the Public Service Commission at

518-474-4520 or secretary@dps.ny.gov or NYSDPS EC&C at 518-486-7874.”